

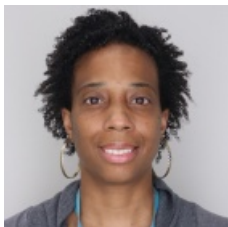
## Waynitra Hall MS, CHES

Senior Research Manager

- [facebook](#)
- [twitter](#)
- [linkedin](#)
  
- [Print Page](#)
- [Email Page](#)

Waynitra Hall (she/her) is the senior research manager within the Department of Child and Adolescent Psychiatry and Behavioral Sciences (DCAPBS) at Children's Hospital of Philadelphia (CHOP) and works closely with several of PolicyLab's faculty members. In this role, Waynitra serves as a resource for research faculty and staff by overseeing research activities and portfolios. Waynitra has over a decade of research experience coordinating and managing research studies and mentoring young researchers. She has extensive experience with study initiation, data management and regulatory procedures.

Prior to her time at PolicyLab, she worked as a project manager in the Division of GI/Hepatology/Nutrition at CHOP where she managed several NIH and CDC-funded projects. Waynitra is very interested in showing under-represented minority high school and college students the world of research and has been very active with PolicyLab's efforts to highlight research endeavors. Waynitra has a BS and MS from James Madison University in Harrisonburg, Va.



Waynitra Hall  
MS, CHES  
Email: [hallw@chop.edu](mailto:hallw@chop.edu)

### Research Interests

[Evidence-based Prevention, Screening & Treatment  
Integration into Schools](#)  
[Maternal-Child Health](#)  
[Equitable Access to Services](#)  
[Social & Environmental Determinants of Health](#)

### Recent Blog Posts