

## Jasmine Figueroa MS

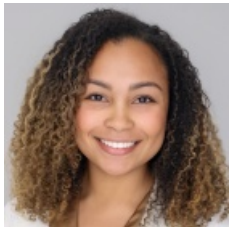
Clinical Research Coordinator

- [facebook](#)
- [twitter](#)
- [linkedin](#)
  
- [Print Page](#)
- [Email Page](#)

Jasmine Figueroa (she/her) is a clinical research coordinator at PolicyLab and the Department of Child and Adolescent Psychiatry and Behavioral Sciences at Children's Hospital of Philadelphia (CHOP). In her role, Jasmine is a member of the Adolescent Depression Prevention and Treatment (ADePT) Lab, collaborating with Dr. Jami Young. Her primary focus involves contributing to studies aimed at enhancing and disseminating interventions for adolescent depression and suicidality.

Prior to joining CHOP, Jasmine was a mental health counselor at Jefferson Hospital, where she provided services to children and adolescents within the behavioral health department. Furthermore, she fulfilled the clinical requirements for her master's degree through a therapist internship at Penn Psychiatric Center.

Jasmine is an alumna of Trinity University, where she earned her bachelor's degree in psychology. Subsequently, she pursued a master's degree at the Philadelphia College of Osteopathic Medicine, attaining a degree in mental health counseling. During her undergraduate years at Trinity University, Jasmine contributed to research efforts as a research assistant in Dr. Carolyn Becker's eating disorder lab for four years, focusing on the manifestation of eating disorders in marginalized populations.



Jasmine Figueroa

MS

Email: [Figuroaj4@chop.edu](mailto:Figuroaj4@chop.edu)

### Research Interests

[Health Needs in Adolescence](#)  
[Evidence-based Prevention, Screening & Treatment](#)  
[Integration into Medical Settings](#)  
[Minority & Immigrant Communities](#)

### Recent Blog Posts